

# TruTemp

by International Thermal Systems

## COMPOSITE CURING OVEN



### Standard Features:

- Quick-ship sizes available
- Gas or Electric Heating, 500°F
- Adjustable ductwork for optimal part heating
- Horizontal Swing Doors
- ITS is able to meet NADCAP, AS9100 + AMS2750E requirements
- Available Horizontal or Combination airflow provides process customization to meet your application requirements and yields excellent temperature uniformity
- Class A for flammable solvents, adhesive, etc.

### Additional Options:

- Custom sizes to meet your needs
- Vacuum Ports
- Recorder
- Thermocouple Jack Panels to monitor product
- Recipe and Data Acquisition Systems - Multiple Recipe options, vacuum pressure monitoring, temperature monitoring including Ramp/Soak Controller, Recorder and Recipe Generation, Storage, Data Acquisition and Recording. Override of process parameters to modify set points of T/C's, vacuum.
- Resin Traps
- Pressure Transducers
- Enhanced Cooling
- Insulated Floor
- Pass Through Chambers Available
- Vacuum System – Basic to Complete - proven high efficiency skid mounted vacuum system providing accurate control and measurement of system parameters.
- TUS/SAT – Temperature Uniformity Survey/System Accuracy Test



ITS offers out of autoclave composite curing ovens that provide the most economical, reliable solutions to meet your composite processing requirements.

Our state-of-the-art designs can incorporate multi-port part thermocouple and vacuum systems that meet NADCAP, AS9100 and AMS2750E.

ITS composite curing ovens are an excellent choice for processing parts with an out-of-autoclave solution.

ITS can provide a complete composite curing system that includes a custom configured oven, integrated multi-port vacuum system, and process controls.

The ITS composite curing oven maintains tight temperature uniformity up to 500°F.

### Air Flow

Combination air flow is standard in our smaller curing chambers. **Three-Five airflow technology** is available for larger chamber sizes ensuring excellent temperature uniformity throughout the work chamber.

# Components of an ITS Out-of-Autoclave Composite Curing System



## TruTempCC Batch Oven

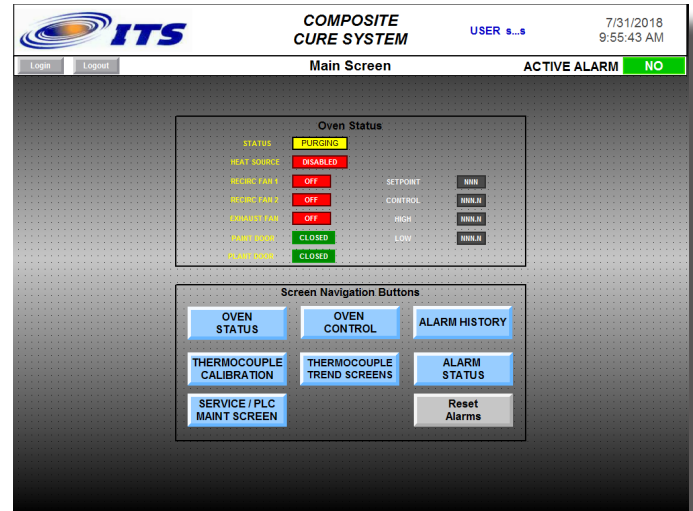
The system starts with a well engineered TruTemp Industrial Oven

5  
THREE

Air Flow Technology

## Proprietary Air Flow Design

Provides the fastest and most uniform cure in the industry



## Control and Data Acquisition Systems Designed by ITS



## Vacuum Systems Single Pumps to Complete Systems

**A Complete Composite Cure System  
ready for manufacturing**