

OVEN DOOR RETROFIT

PRODUCT BULLETIN

B-R-0001

The Roll Seal Door package replaces manual steel swing doors or vertical steel guillotine doors for a state of the art, energy efficient, and safe alternative.

BENEFITS:

- Improves chamber seal, which improves uniformity and energy consumption
- Eliminates floor space usage that is required with swinging doors
- Safety:
 - Added man-trap pull cord
 - Door can be opened from the inside
 - Obstructions in aisle will not prohibit door from being opened
- Remote door openers added to fork trucks to improve productivity
- Less repair and maintenance due to improved design, minimizing wearable components



Turn-key installation, full removal and installation completed in as little as 1 business day

OVEN DOOR RETROFIT

PRODUCT BULLETIN



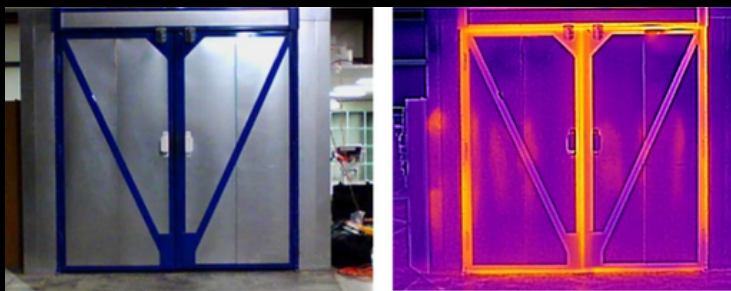
APPLIES TO:

- Curing Chambers
- Batch Ovens
- Indexing Conveyor Ovens
- Any oven operating under 500°F

The ITS RollSeal Door retrofit brings a compact, energy efficient, and safe design to batch and conveyor style thermal processing units of all shapes and sizes.

The safety and efficiency of this design has been proven on a variety of equipment types in multiple industries around the world.

Classic Steel Double Wing Door



RollSeal Door

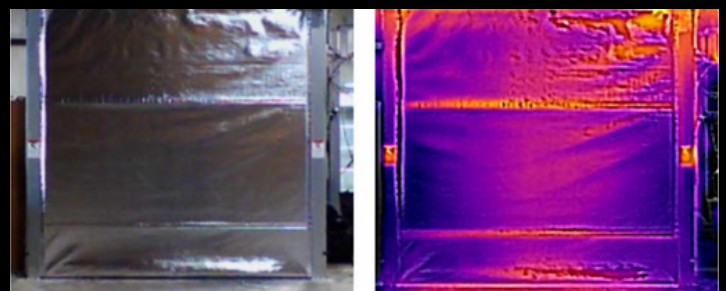


Photo taken with a Thermal Camera showing hot spots around the entire perimeter of the door. Note the large source of heat loss. RollSeal Doors sealing technology keeps heat from escaping with zero floorspace loss.

